

EOS 350D Digital SLR Camera

Canon

advanced simplicity®



Striking quality, inspired design.

Great pictures made easy for developing photographers.

EOS

DIGITAL

8.0
MEGA
PIXELS

7-POINT
AF

3fps
CONTINUOUS
SHOOTING

PictBridge

DiGiC
II

BREATHTAKING QUALITY

DAZZLING RESOLUTION AND RICH COLOUR

Experience exceptional clarity, razor-sharp images and the rich colours that this **8.0 Megapixel CMOS sensor** can produce. Combined with a 1.6x lens conversion factor and the super-fast speed of DiG!C II, the EOS 350D is the perfect camera for the aspiring photographer.

CAPTURE MORE DETAIL WITH DiG!C II

The purpose-built **DiG!C II image processor** is a single chip that acts as the brain in every one of our digital cameras. With DiG!C II, you'll capture unsurpassed detail and brilliant colour in every photo, exactly the way you remember it.

The imaging sensors of Canon Digital SLR cameras are larger, capturing more data and detail in every shot. The DiG!C II processor, with its powerful processing ability, translates huge amounts of data at blistering speed, assembling images of exceptional clarity with natural colours reflected in every detail.



DiG!C II Imaging Engine

INTELLIGENT DESIGN

COMPACT DESIGN FOR EASE OF USE

Packed full of features and totally mobile, the EOS 350D is designed for budding photographers who like to get out. Its lightweight battery is capable of taking up to 600 shots. The **Mode Dial** on the top has been designed to make one-hand shooting comfortable and **Cross Keys** located right under your thumb handle the operations you'll use most.

You can take the EOS 350D anywhere with its super stylish, lightweight design. It's available in two colours: black and silver.



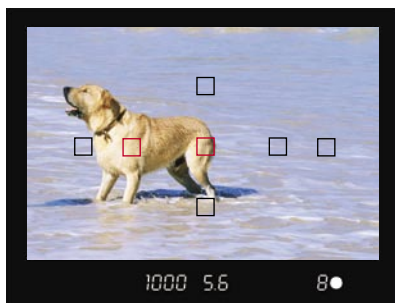
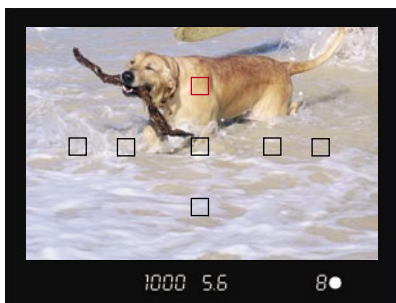
Mode Dial



Cross Key Dial

GET EVERY PHOTO IN FOCUS

Even when shooting an off-centre subject you'll still get the perfect focus for your shot. Using a **7-point Autofocus** system, the camera automatically detects your subject and focuses accurately. Of course you can also choose the point of focus manually to get the exact effect you desire.



7-point Wide-Area AF system

CAPTURE THE MOMENT – QUICKLY AND EASILY

There are some shots that just won't wait. And to help you catch every shot the EOS 350D has been designed with a super-fast 0.2 sec start up time, plus the ability to take photos at a speedy **3 frames per second** at up to 14 shots. And with a top **shutter speed of 1/4000 sec**, and flash sync at 1/200 sec, you won't miss a shot.

COMPLETE SIMPLICITY

POINT AND SHOOT. EASY

Although capable of advanced photography, the EOS 350D is also perfect for beginners wishing to sharpen their skills. With **7 Basic Zone modes** such as Sports, Portrait and Landscape, the camera optimises the settings for particular situations and conditions – this means great results with no effort.



Full Auto



Portrait



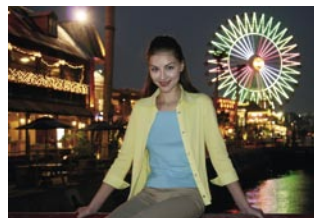
Landscape



Close-Up



Sports



Night Portrait



Flash Off

SIMPLE FLASH FUNCTIONS

The highly intelligent built-in flash with **E-TTL II Flash Metering System** does the work for you. It incorporates subject distance, reflection and motion into its calculations, providing accuracy and stability in flash exposure.

REVIEW YOUR SHOTS IN AMAZING DETAIL

You'll love the detail you get from the EOS 350D's impressive **1.8 inch LCD screen**. With the Single Image Display you can zoom in and magnify the image taken up to 10x – then simply scroll up, down, left or right for a close-up on a particular area. The LCD also reveals shooting information so you'll know exactly what you're doing and has the added advantage of a 9-image index.

View your photos easily with auto playback, automatic image rotation and the ability to jump forward or back up to 100 images at a time – making reviewing your shots easier than ever.

DIRECT PRINTING MADE EASY

You don't need a computer to print your photos, thanks to Canon's **Direct Print** technology. Simply connect the EOS 350D camera to a Canon PIXMA Bubble Jet Photo printer, Canon Compact Photo printer or **PictBridge** compatible printer to allow access to a wide range of printing media, modes and styles. With the EOS 350D A3+ prints are not only possible, they are breathtaking.



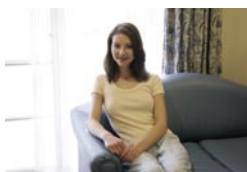
FAST AND SIMPLE DOWNLOADING

Don't waste time waiting for your images to download. With the EOS 350D's **USB 2.0 Hi-Speed Interface** you'll be viewing your photos on your computer in no time. With a super-fast transfer speed, it's easy to get your pictures displayed on your screen quickly.

CONTROL AND FREEDOM

TEST YOUR CREATIVITY

Take creative control of your photography without getting out of your depth, by choosing the effect you want with the **5 Creative Zone modes** such as Program AE, Shutter Priority AE and Aperture Priority AE. Develop your skills by manipulating shutter and aperture combinations, or enjoy the freedom of going totally Manual.



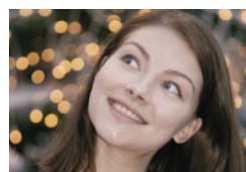
Manual



Program AE



Shutter Priority AE



Aperture Priority AE



Automatic Depth of Field AE

AUTOMATIC EXPOSURE AND FOCUS PRECISION

The EOS 350D's 35-zone Evaluative Metering Sensor and 3 metering modes make the art of controlling exposure as easy or advanced as you want.

The **35-zone Evaluating Metering** ensures accurate, consistent exposure, taking into account lighting extremes and subject position through the active focusing point. Whether the light is bright and sunny, darkly atmospheric or it comes from the front or the back, exposure is detailed, natural and flattering. Control is there when you want it with **Partial Metering**, to bring extra sensitivity to high-contrast situations or **Centre-weighted Average Metering** in Manual mode.

Highly responsive Autofocus makes for shooting excitement. The camera automatically uses one of the 3 AF systems to deliver fast, spot-on focus in any situation. **One Shot AF** is the best choice for still subjects, locking in focus as you push the shutter button halfway. **AI Servo AF** tracks active subjects, predicting their movement. And **AI Focus AF** switches between One-Shot AF and AI Servo AF when subjects start and stop – making it perfect for shooting children, pets and other unpredictable subjects.



35-zone Evaluative Metering



Partial Metering



Centre-weighted Average Metering



AI Servo AF



One-Shot AF

GET IT RIGHT. EVERY TIME

With the EOS 350D you'll avoid disappointing photos caused by difficult lighting conditions. The camera automatically compensates for shifting light conditions by supporting an extensive **range of ISO speeds**, as if you actually had films of various speeds in the camera. With the **Auto Exposure Bracketing** feature, the EOS 350D will record 3 consecutive images with bracketed exposures so even the most crucial shots will have the correct exposure everytime.

Auto Exposure Bracketing



Increased exposure



Standard exposure



Decreased exposure

EXPAND WITH THE EOS SYSTEM

THE LENS IS EVERYTHING

There are **more than 50 lenses** in the world-renowned **Canon EF lens range**, offering high-quality optics and endless versatility. The EOS 350D is compatible with all of these professional lenses, from ultra wide to super telephoto and everything in between. This huge range of superior lenses offers endless photographic and creative possibilities to the developing photographer.

LIGHT UP ANY SITUATION

Canon's Speedlites offer professional-quality illumination for virtually any subject. For full featured flash photography, the EOS 350D is compatible with Canon's entire range of **EX-series Speedlites**. You can also link several off-camera flashes to fire together wirelessly, with the optional speedlite Transmitter ST-E2 to light up any situation.



Canon EF lens range

INCLUDED KIT COMPONENTS

- EF-S 18-55mm f/3.5-5.6 II lens, Battery Pack NB-2LH, Battery Charger CB-2LT, Neck Strap EW-100DGR, Eyecup Ef, Camera Cover R-F-3, USB Interface Cable IFC-400PCU and Video Cable VC-100.



EOS 350D Kit components

INCLUDED SOFTWARE

- ZoomBrowser EX (Windows) – Image Browser (Mac): A speedy easy-to-use program for transferring, retouching, cataloguing and managing digital files.
- Digital Photo Professional: Quickly preview and set parameters for RAW images and convert batches of RAW files to JPEG and TIFF formats.
- EOS Capture: Use your USB-interface computer to control the camera. Includes many common operations: shutter release, drive mode, recording quality, ISO speed, metering pattern, WB modes and more.
- PhotoRecord (Windows): Works with ZoomBrowser EX to automatically create personalised photo albums with dynamic layouts, text and graphics anywhere on the page that can then be printed in fun ways.
- PhotoStitch for automatically 'stitching' together a series of shots to create seamless panoramic images.

OPTIONAL ACCESSORIES

- AC Adaptor Kit ACK700 providing the ability to shoot powered directly from mains power supply
- Semi-Hard Case EH18-L accommodating for the body and the lens.
- Battery Grip BG-E3 with vertical operation controls and housing dual NB-2LH Li-Ion battery packs.
- Remote Switch RC-60E3, Remote Controller RC-1 and Remote Controller RC-5.



Semi-Hard Case
EH18-L



Battery Grip
BG-E3



Remote Switch
RC-60E3

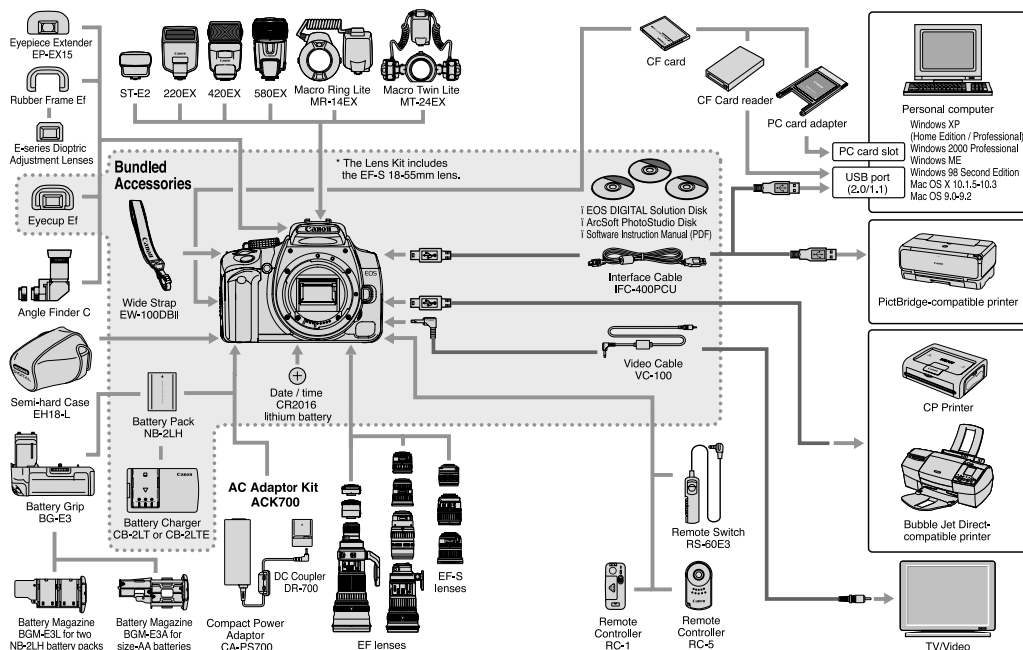


Wireless Remote
Controller RC-1/RC-5



AC Adaptor
Kit ACK-700

EOS 350D SYSTEM CHART



Want to know more? Visit canon.com.au

EOS 350D SPECIFICATIONS

TYPE	Digital AF/AE SLR camera with built-in flash
Type	Type I or II CF card
Recording media	22.2 x 14.8mm
Image sensor size	Canon EF lenses (including EF-S lenses)
Compatible lenses	(Focal length conversion factor: equivalent to approx.1.6 times the focal length compared to 35mm format)
Lens mount	Canon EF mount
IMAGING ELEMENT	
Type	High-sensitivity, high-resolution, single-plate CMOS sensor
Pixels	Effective pixels: Approx. 8.00 Megapixels Total pixels: Approx. 8.20 Megapixels
Aspect ratio	2:3 (vertical:horizontal)
Colour filter system	RGB primary colour filter
Low-pass filter	Located in front of the image sensor, non-removable
RECORDING SYSTEM	
File format	Complies with Design rule for Camera File System 2.0 and Exif 2.21
Recording format	JPEG, RAW (simultaneous recording possible)
File size*	(1) Large/Fine: Approx. 3.3MB (3456 x 2304 pixels) (2) Large/Normal: Approx. 1.7MB (3456 x 2304 pixels) (3) Medium/Fine: Approx. 2.0MB (2496 x 1664 pixels) (4) Medium/Normal: Approx. 1.0MB (2496 x 1664 pixels) (5) Small/Fine: Approx. 1.2MB (1728 x 1152 pixels) (6) Small/Normal: Approx. 0.6MB (1728 x 1152 pixels) (7) RAW: Approx. 8.3MB (3456 x 2304 pixels) *Exact file sizes depend on the subject, ISO speed, processing parameters, etc.
File numbering	Consecutive numbering, auto reset
Colour space	sRGB, Adobe RGB
Processing parameters	Parameter 1 and 2, set 1 to 3 (three custom processing parameters), B/W
Interface	USB 2.0 Hi-Speed Video output (NTSC/PAL)
WHITE BALANCE	
Type	Auto, Daylight, Shade, Cloudy, Tungsten, Fluorescent, Flash, Custom, Manual colour temperature setting
Auto White Balance	Via image sensor data
Colour temperature correction	White balance correction: ±9 stops in full-stop increments White balance bracketing: ±3 stops in full-stop increments
VIEWFINDER	
Type	Eye-level SLR (with fixed pentamirror)
Coverage	Approx. 95% vertically and horizontally (coverage against JPEG Large)
Magnification	0.8x (-1 diopter with 50mm lens at infinity)
Eyepoint	21mm
Built-in diopter adjustment	-3.0 - +1.0 diopter
Focusing screen	Fixed, Precision Matte
Mirror	Quick-return half mirror (Transmission: reflection ratio of 40:60)
Depth-of-field preview	Enabled with depth-of-field preview button
AUTOFOCUS	
Type	TTL-CT-SIR with a CMOS sensor (TTL secondary image registration)
AF points	7
AF Metering range	EV -0.5-18 (at 20°C, ISO 100)
Focus modes	One-Shot AF, AI Servo AF, AI Focus AF, Manual focusing (MF)
AF point selection	Auto, manual
Selected AF point display	Superimposed in viewfinder and indicated on LCD panel
AF-assist beam	Built-in flash fires intermittently
Effective range:	Approx. 4.0m at centre, approx. 3.5m at periphery
EXPOSURE CONTROL	
Metering modes	35-zone TTL full aperture metering • Evaluative metering (linkable to any AF point) • Partial metering at centre (approx. 9% of viewfinder) • Center-weighted Average metering
AE Metering range	EV 1-20 (at 20°C with 50mm f/1.4 lens, ISO 100)
Exposure control	Program AE (Full Auto, Portrait, Landscape, Close-up, Sports, Night Portrait, Flash Off, Program), Shutter Priority AE, Aperture Priority AE, Depth-of-field AE, manual exposure, E-TTL II autoflash
ISO speed	Basic Zone modes: Automatically set (ISO 100-400) Creative Zone modes: ISO 100, 200, 400, 800, 1600, Manual: ±2 stops in 1/3- or 1/2-stop increments
Exposure compensation	AE: ±2 stops in 1/3- or 1/2-stop increments
AE lock	Auto: Applied in One-Shot AF mode with evaluative metering when focus is achieved. Manual: By AE lock button in all metering modes.

SHUTTER	
Type	Electronically-controlled, focal-plane shutter
Shutter speeds	1/4,000 to 30 sec. (1/3- and 1/2-stop increments), bulb X-sync at 1/200 sec.
Shutter release	Soft-touch electromagnetic release
Noise Reduction	Settable with C.Fn-02 (Noise reduction for long exposure)
Self-timer	10-sec. delay
Remote control	Remote control with Remote Switch RS-60E3, Wireless Controller RC-1 and RC-5
BUILT-IN FLASH	
Type	Retractable, auto pop-up flash
Flash metering	E-TTL II autoflash
Guide No.	13 (ISO 100, in meters)
Recycle time	Approx. 3 sec.
Flash-ready indicator	Flash-ready icon lights in viewfinder
Flash coverage	Up to 17mm focal length
FE lock	Provided
Flash exposure compensation	±2 stops in 1/3- or 1/2-stop increments.
EXTERNAL SPEEDLITE	
EOS-dedicated Speedlite	E-TTL II autoflash with EX-series Speedlite
PC terminal	Not Provided
Zooming to match lens focal length	Provided
DRIVE SYSTEM	
Drive modes	Single, continuous, and Self-timer (10 sec.)
Continuous	Max. 3 shots per sec. (at 1/250 sec. or faster for all recording qualities)
Max. burst	JPEG* (Large/Fine): Approx. 14, RAW: Approx. 5 *Varies depending on the subject, ISO speed, processing parameters, CF card, etc. **In use of 512MB CF card
LCD MONITOR	
Type	TFT LCD monitor
Monitor size	1.8 inches
Pixels	Approx. 115,000
Coverage	100% with respect to the effective pixels
Brightness adjustment	Five levels provided
Interface languages	15
IMAGE PLAYBACK	
Display format	Single image, shooting information, 9-image index, magnified view (Approx. 1.5x - 10x), autoplay, image rotation, and jump
Highlight warning	In the shooting information mode, any overexposed highlight areas with no image information will blink.
IMAGE PROTECTION AND ERASE	
Protect	Single images can be erase-protected or not.
Erase	One image or all images in the CF card can be erased (except protected images).
DIRECT PRINTING	
Compatible printers	CP Direct, Bubble Jet Direct, and PictBridge-compatible printers
Printable images	JPEG images (DPOF printing possible)
CUSTOMISATION	
Custom Functions	9 Custom functions with 24 settings
POWER SOURCE	
Battery	One Battery Pack NB-2LH. *AC power can also be supplied with the AC Adaptor Kit ACK700 **With Battery Grip BG-E3, 2 battery pack or AA-size batteries can be used.
Battery life (BP-511A)	Temperature Shooting Conditions No Flash 50% Flash Used At 20°C Approx. 600 Approx. 400 At 0°C Approx. 450 Approx. 350
Battery check	Automatic
Power saving	Provided. Power turns off after 1, 2, 4, 8, 15, or 30 min.
Date/Time battery	One CR2016 lithium battery
DIMENSIONS AND WEIGHT	
Dimensions	126.5 (W) x 94.2 (H) x 64 (D) mm
Weight	485g (body only)
OPERATING ENVIRONMENT	
Working temperature range	0°C - 40°C
Working humidity	85% or less

All data based on Canon's Standard Test Method.
Subject to change without notice.

Canon Australia Pty. Ltd.	Canon New Zealand Limited	canon.com.au
Freecall: 1800 021 167	Freecall: 0800 222 666	canon.com.nz
Facsimile No: + 61 2 9805 2632	Facsimile No: + 64 9 489 0380	canon.com.au/digitalimage

Canon, the Canon logo and the DiGIC logo are registered trademarks of Canon Inc. 'advanced simplicity' is a trademark of Canon Australia Pty Limited. All other trademarks are property of their respective owners.